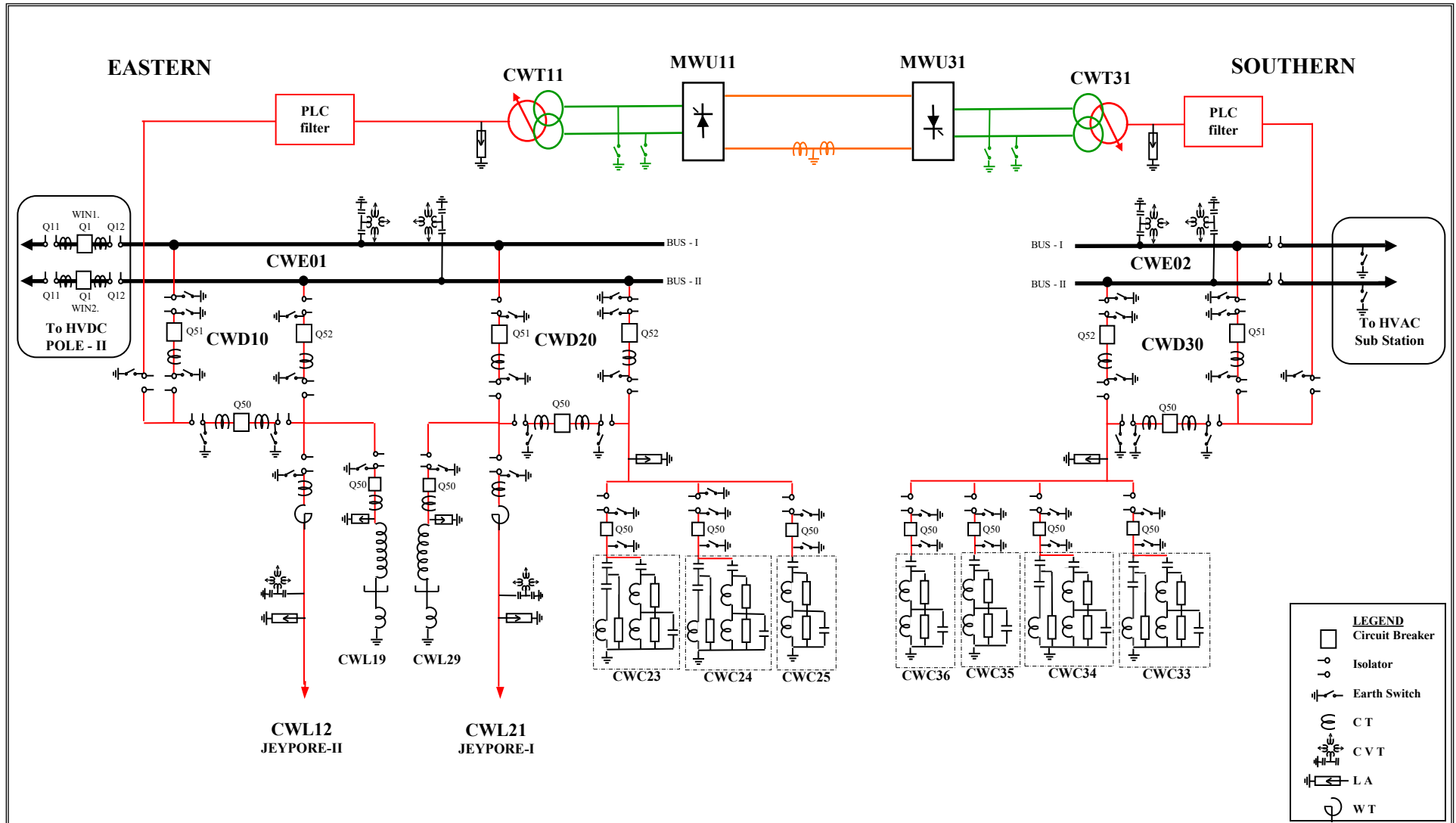


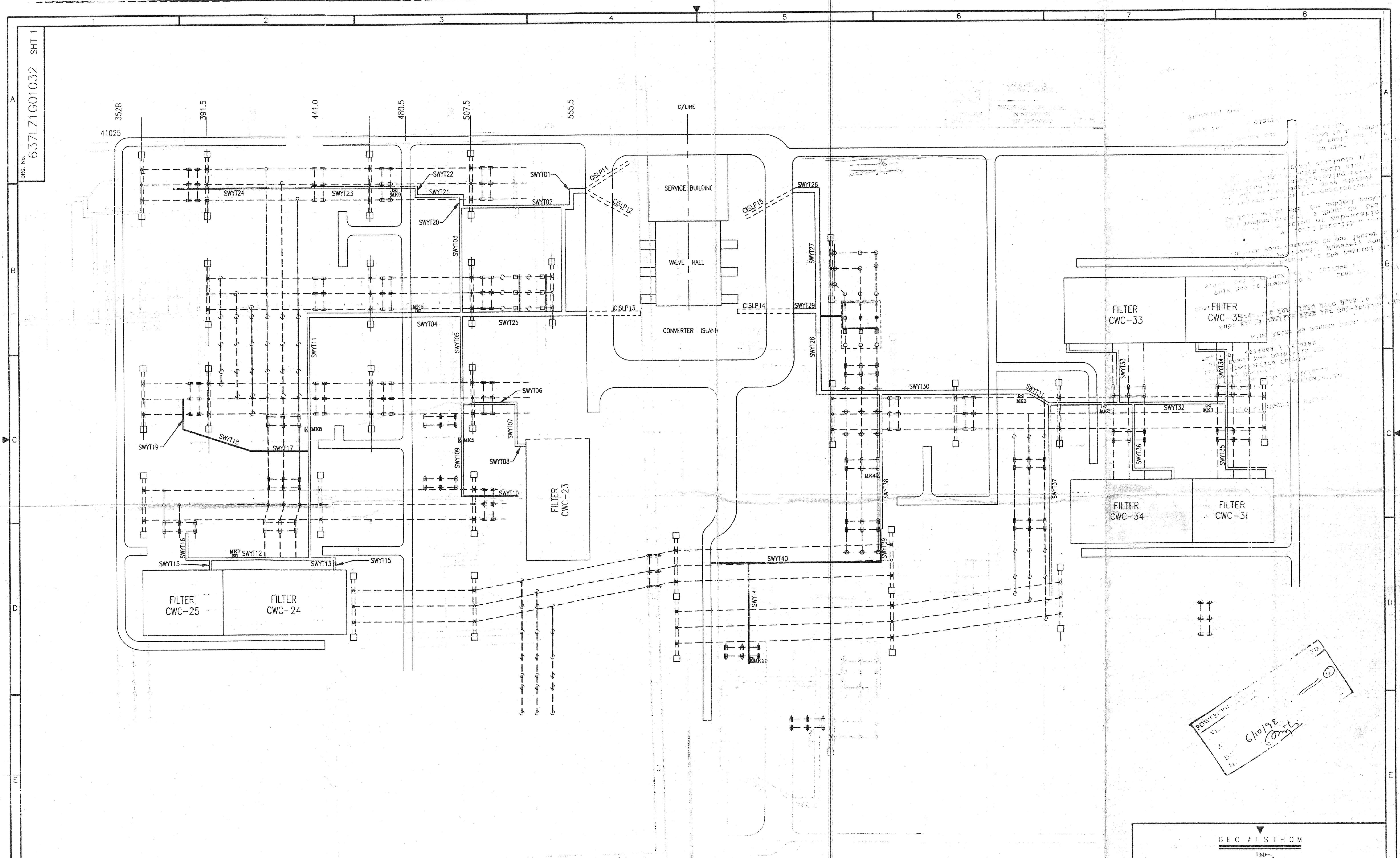
POWER GRID CORPORATION OF INDIA LIMITED

VISAKHAPATNAM STATION (POLE-I)

SINGLE LINE DIAGRAM



DRG. No. 637LZ1G01032 SHT 1



POWERGRID
 6/10/98
[Signature]

C.A.D. DATA
 ISSUE A
 NAME
 LOCATION
 VISA2735

ISSUE A
 DATE 09/09/98

COPYRIGHT © 1998. GEC ALSTHOM T&D Power Electronic Systems Limited

THIRD ANGLE PROJECTION
 ALL DIMENSIONS IN MILLIMETRES UNLESS OTHERWISE STATED
 DRAWING TO BS308 UNLESS OTHERWISE STATED
 FOR THE STANDARD OF ACCURACY OF ALL UNTOLERANCED DIMENSIONS SEE SPECN. STAND/023/PROC
 IF IN DOUBT ASK
 DO NOT SCALE PRINT

GEC ALSTHOM
 T&D
GEC ALSTHOM T&D
 Power Electronic Systems Limited
 Stallev, England

TITLE
CABLE ROUTING & EQUIPMENT REFS. FOR OVERALL SUBSTATION LAYOUT

DRG. No. 637LZ1G01032 SHT 1
 CURRENT ISSUE A

WHEN QUOTING DRG. No. STATE CURRENT ISSUE
 CUSTOMER POWERGRID CORP OF INDIA ORDER No. CF0136
 ORIGINAL SIZE A1 - 594 x 841mm

TABLE 29-1**SUMMARY OF KEY FILTER RATING PARAMETERS**

(a) Capacitors

Bank	Phase Voltage (kV)	Phase Capacitance (μ F)	Series Units	Parallel Units	Unit Voltage (kV)	Unit Capacitance (μ F)
DDC1	257	2.10	12	10	21.7	2.52
DDC2	9.9	4.27	2	2	15.8	4.27
BDC1	261	1.31	12	10	21.8	1.57
BDC2	12.3	2.66	2	2	15.5	2.66
BCC1	240	0.80	11	10	21.8	0.88
BCC2	31.2	6.37	2	8	15.6	1.59

measured value = typically $\pm 5\%$ of nameplate value

b) Reactors

Reactor	Inductance (mH)	Current (A)	BIL (kV)
DDL1	15.6	185	550
DDL2	9.7	186	250
BDL1	25	115	550
BDL2	15.5	116	250
BCL1	1592	71	325

measured value = typically $\pm 5\%$ of nameplate value

(c) Resistors

Resistor	Resistance (cold) (γ)	Resistance (hot) (Ω)	Power (kW)	BIL (kV)
DDR1	198	217	52.5	550
DDR2	256	304	99.1	250
BDR1	319	348	51.9	550
BDR2	410	487	101	250
BCR1	9570	10K	10.3	325

measured value = typically $\pm 5\%$ of nameplate value

FIGURE 29-1

HARMONIC FILTER ELECTRICAL ARRANGEMENT

